

Our products at a glance:

WinMOD Products

- System Software
- System Configurations
- Add-Ons
- Assistances
- OCA Libraries

System Training

- Individual training courses with the WinMOD System Software and WinMOD Configurations for the connection to your automation system.

Startup for Introduction of WinMOD System

- Project Consulting
- Project Engineering
- WinMOD Libraries
- Workflow Optimization/-Assistances

WinMOD Libraries

- company specific libraries
- technological specific libraries

... more than 15 years experience in Factory Acceptance Test.

You will find us:



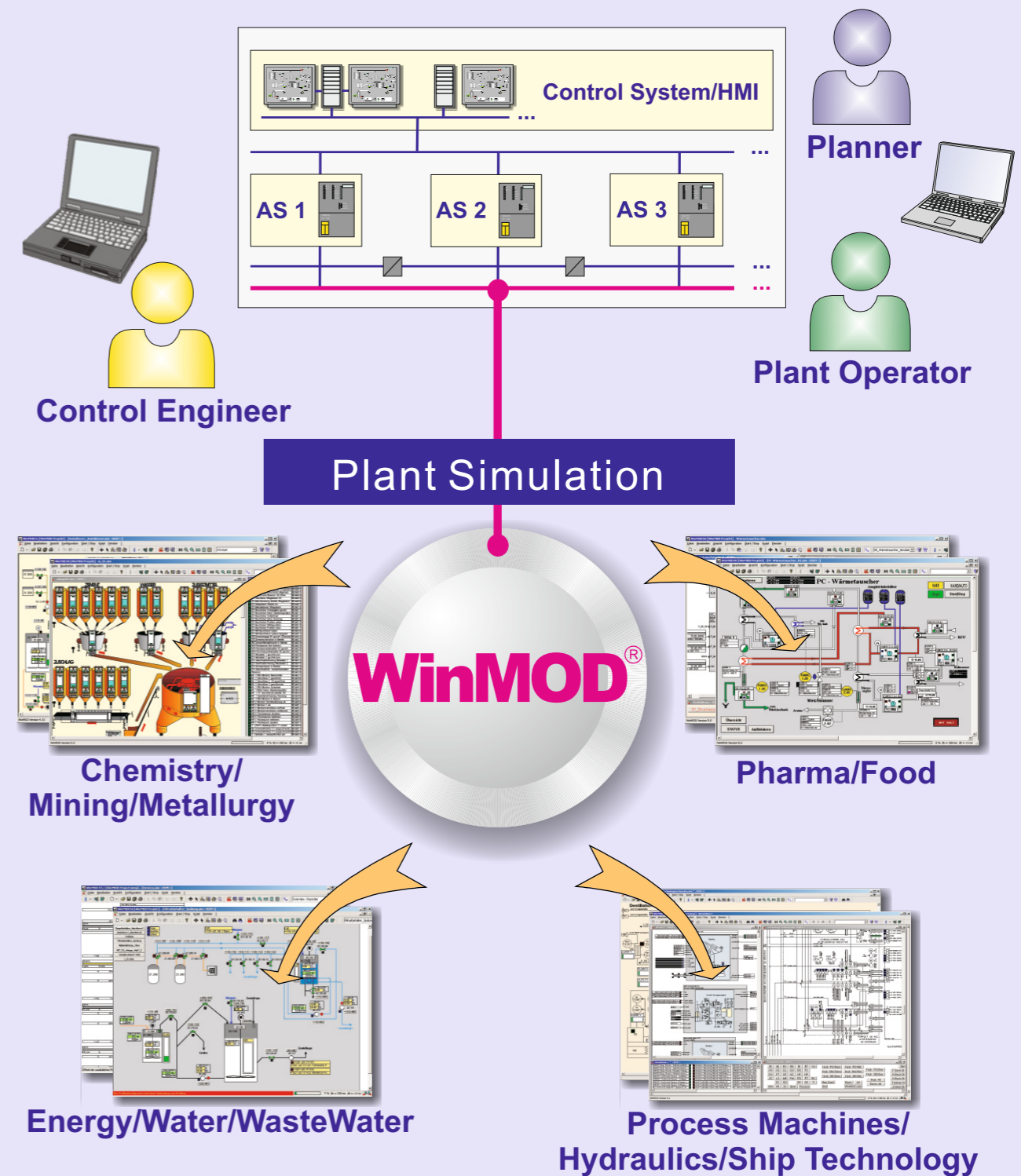
Mewes & Partner GmbH
 Neuendorfstr. 15
 16761 Hennigsdorf
 Germany

Tel.: + 49(0)3302 2097-0
 Fax: + 49(0)3302 2097-111

www.winmod.de
 winmod@mewes-partner.de

We use it: Factory Acceptance Test with WinMOD

PROCESS



Real-Time Simulation Center for Automation

Real-Time Simulation Center for Automation

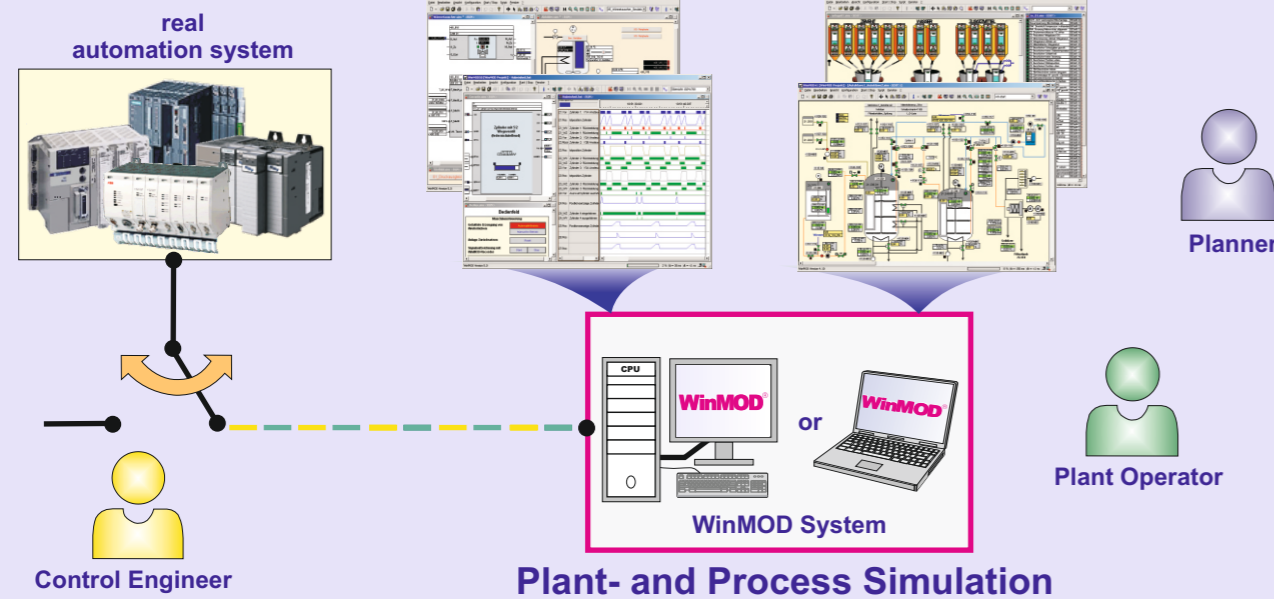


Requirements of Process Automation concerning Factory Acceptance Test for Process Plants

- „Shortening of Commissioning Time”
- „Improvement of Software Quality”
- „Cost- and Risk Reduction”
- „Optimization and Training with the Shadow Plant”
- „Qualification of New Personnel”

WinMOD for Factory Acceptance Testing

In process automation the Factory Acceptance Test using WinMOD Systems is the acknowledged system platform since more than 15 years.



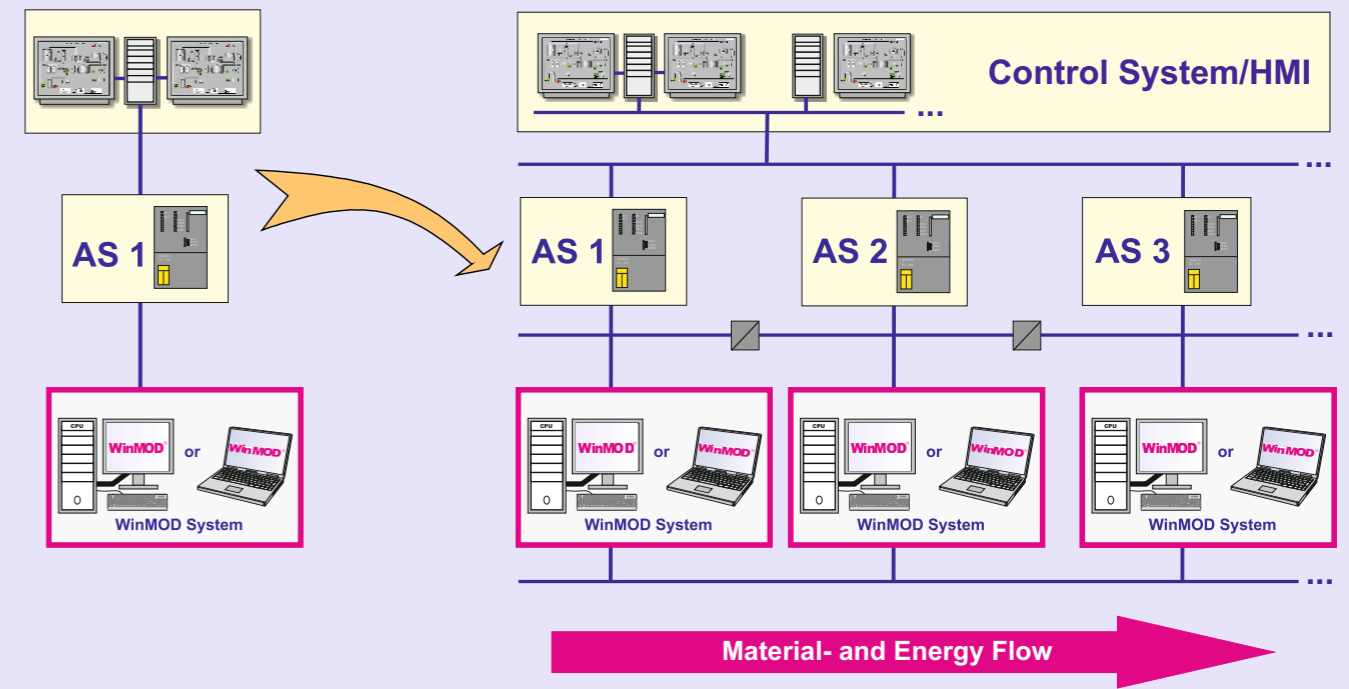
WinMOD Systems provide the conditions for the simulation of process plants and enable to connect with the automation systems and control systems in real-time. Selectable system configurations connect the plant- and process simulation with your automation systems.

These connections are executed for example with PROFINET IO/PROFIsafe, with PROFIBUS DP/PROFIsafe, with Modbus TCP/IP or with system specific I/O communication like Ethernet.

Plant- and Process Simulation

- The plant- and process simulation includes a functional model of the real plant created with a WinMOD System.
- For the plant simulation WinMOD Systems are used for the simulated software tests of the controls. The simulation depth corresponds the requirements for software test and for the Factory Acceptance Test (FAT).
- The testing environment for process simulation consists of real controls/control systems and a with WinMOD emulated equipment periphery. The behavior of process components is simulated so far as it is necessary for the execution of tests, optimization and training.

WinMOD Systems: Modular for the Plant- and Process Simulation from the Single Control to the Control System



Optimized Integration into the Engineering Workflow: Utilization of Assistance Tools and Libraries for WinMOD

